

Nº 40

PORTMAN SQUARE

MARYLEBONE

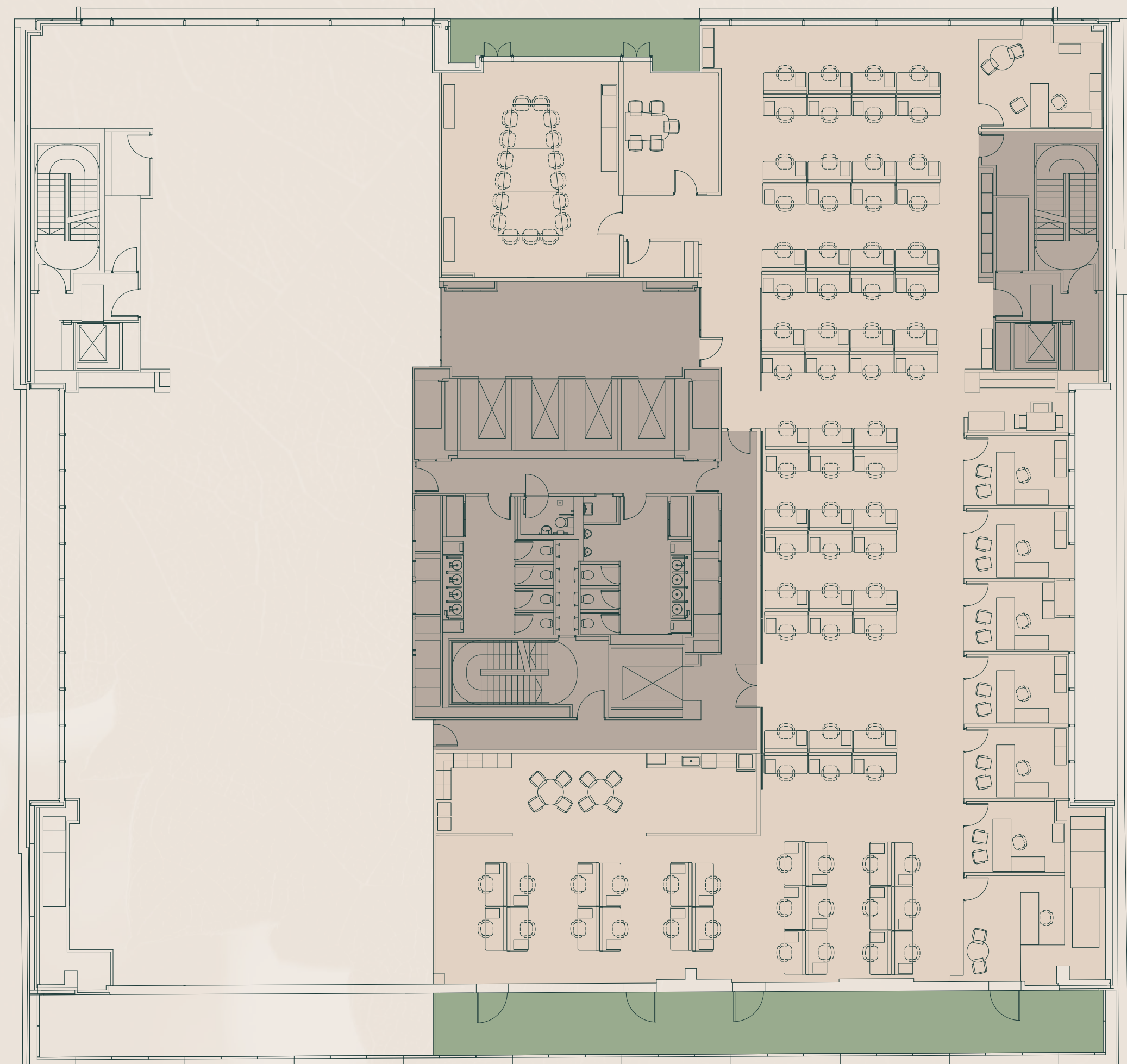
PART 5TH FLOOR

8,820 SQ FT / 819.4 SQ M

Workstations	80
18 person boardroom	01
Private offices	08
5 person meeting rooms	02
Kitchen / breakout area	01

Net Internal Area subject to final measurement
on completion of division works.

PORTMAN SQUARE



- Office
- Terrace
- Core

Existing layout.

Floor plan not to scale. For indicative purposes only.



Nº 40

PORTMAN SQUARE

MARYLEBONE

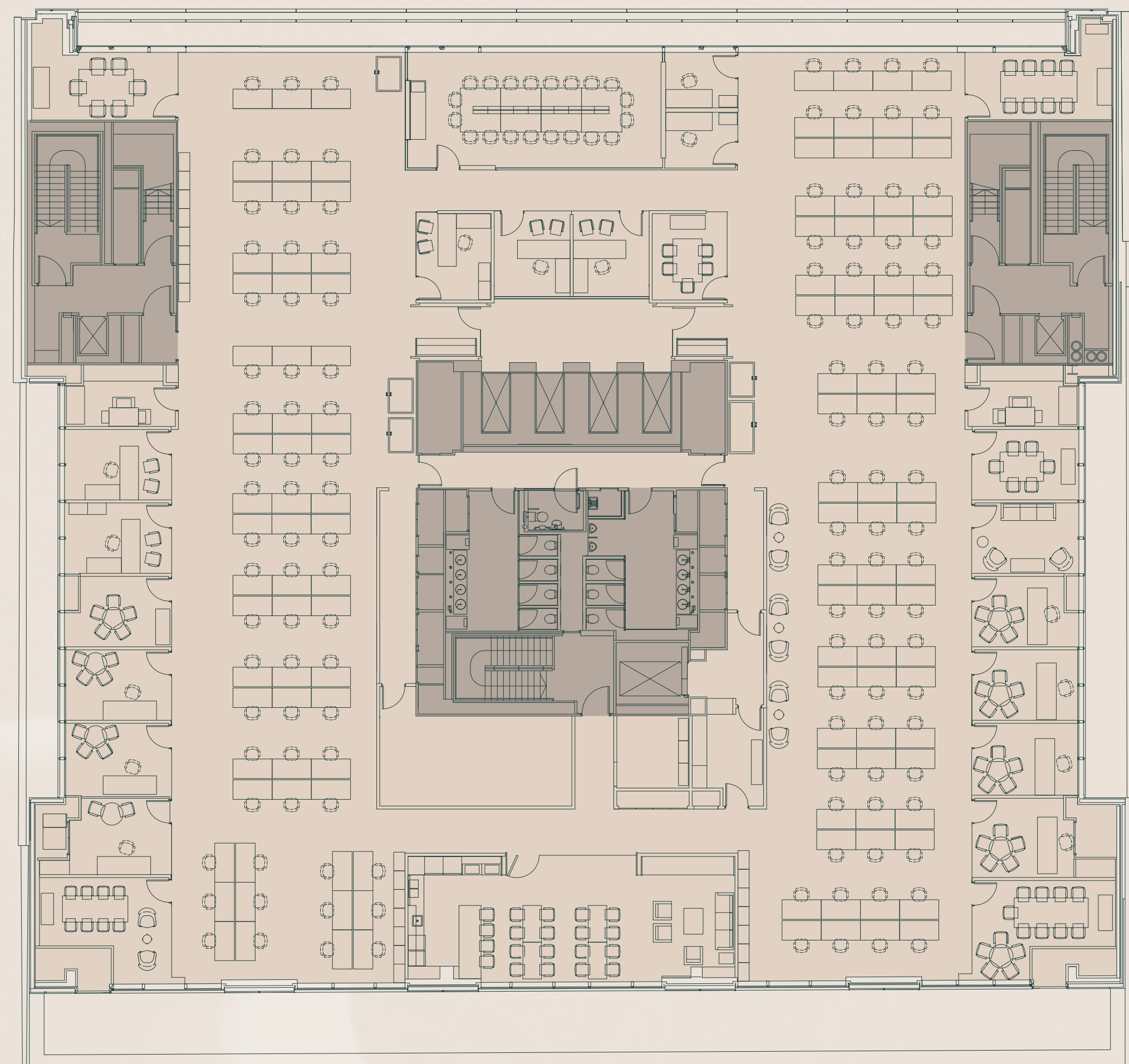
6TH FLOOR

14,091 SQ FT / 1,309.1 SQ M

Workstations	132
20 person boardroom	01
14 person meeting room	01
Private offices	12
8 person meeting rooms	02
6 person meeting rooms	02
5 person meeting rooms	02
Informal meeting room	01
Phone booths	05
Kitchen / breakout area	01

Net Internal Area subject to final measurement.

PORTMAN SQUARE



- Office
- Terrace
- Core

Existing layout.

Floor plan not to scale. For indicative purposes only.

